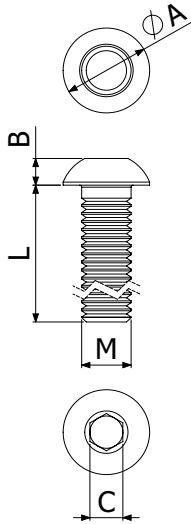




**CHARACTERISTICS**



Models: 6x25; 8x30; 10x40.

Finishes: EZ, ss304.

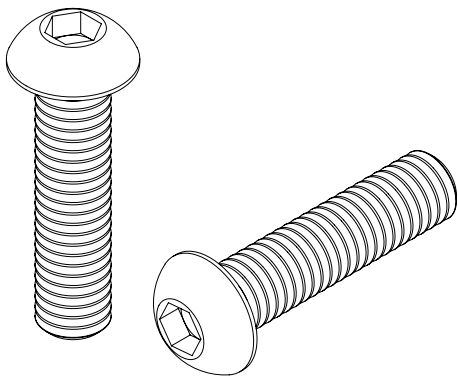
Characteristics:

- Reduced round head (low and without edges)
- Hexagonal hollow head (allen key)

Dimensions:

MODEL	M(mm)	L (mm)	A (mm)	B (mm)	C (mm)	T (N-m)
M6x25	6	25	10	3,3	4	8
M8x30	8	30	14	4,4	5	15
M10x40	10	40	17,5	5,5	6	35

**USE INSTRUCTIONS**



- It is recommended to use this type of bolts when you need to be able to tighten the bolt from the inside of a tray or trunking. The most common situation is the fixing of trays to supports / profiles with nut spring.
- Bolt M6x25 ISO 7380 is used:
  - To fix BASORTRAY sheet trays to SP / SPD family supports or to profiles 41/82 from the open face of the profile with a spring / non-slip nut.
- Bolt M8x30 ISO 7380 is used:
  - To fix BASORFIL trays to SP / SPD family supports or to profiles 41/82 from the open side of the profile with of SSC Central Suspension and spring / non-slip nut.
  - For the production of basorfil accessories (eg flat curves) using SSC Central Suspensions.
  - To fix the spacer profile to the rungs on ladder trays using DIN 6923 nut and additionally (depending on the orientation of the rung) DIN 9021 washer.
- Bolt M10x40 ISO 7380 is used:
  - To fix ladder trays from the inside of a rung to a profile 41 in vertical position together with spring nut M10.